

⇒ Unless the ways of people and businesses change then it is estimated that we will run out of landfill space in fewer than 9 years

⇒ Landfill tax to reach £40 a tonne by April this year

⇒ By the end of this century, heat waves of 40°C+ could be commonplace during UK summers

⇒ Generally, energy will make up 5-10% of your budget  
Lighting uses 30-40% of that energy

⇒ You may be affected by a new legally binding climate change and energy saving scheme called the Carbon Reduction Commitment (CRC)

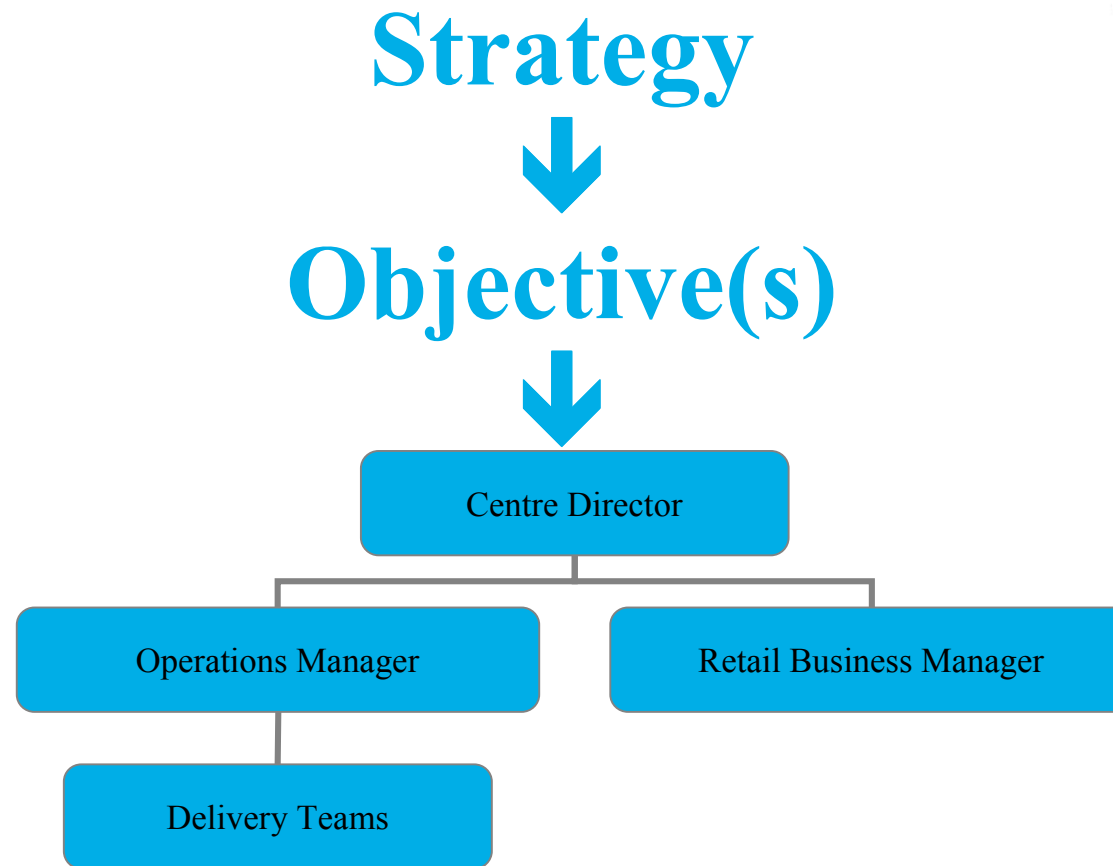


⚡ Explore practical ways of approaching recycling and energy saving, as a group of varied experience, to change attitudes and adopt best practice within the framework of an acknowledged strategy that may be referred back to and used to assess progress ⚡

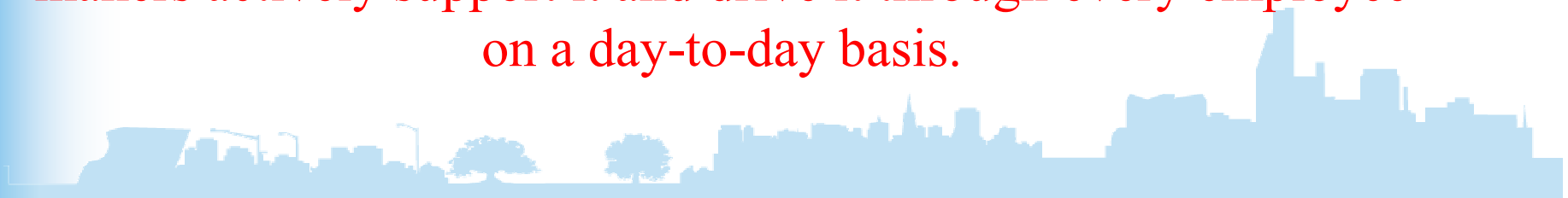


A successful strategy must be  
based on best practice





**A strategy will fail before it even begins unless key decision makers actively support it and drive it through every employee on a day-to-day basis.**

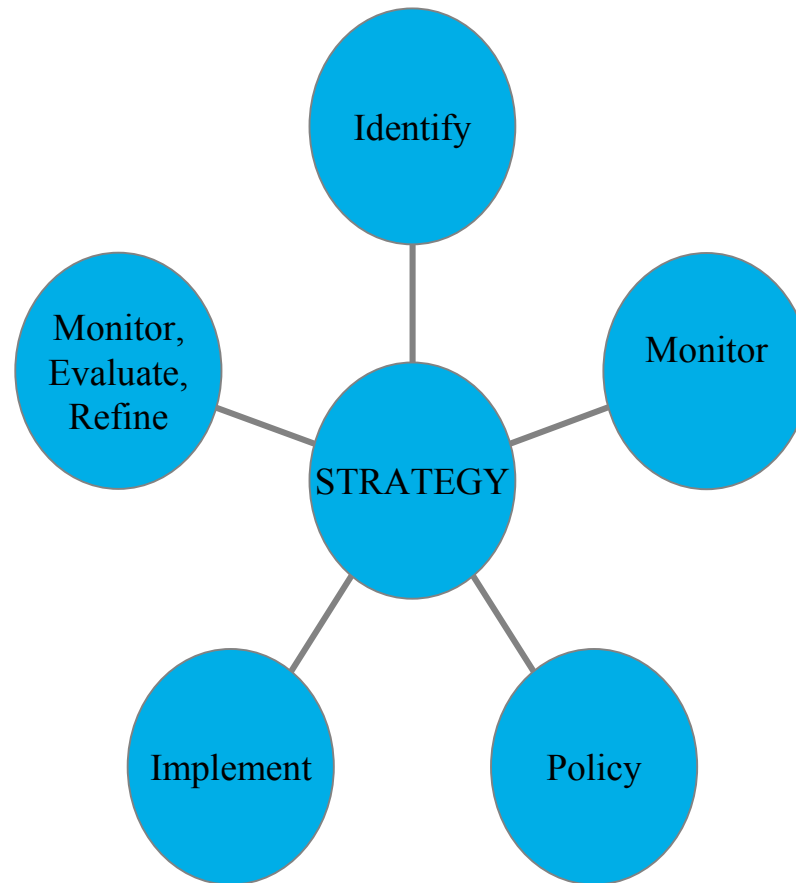


# Strategy

1. Know where you want to go so that you can plan your route
2. Issue an organisation-wide policy statement
3. Prioritise practical measures...

To change or not to change?







⇒ What waste streams are you generating?

⇒ How are you currently handling each waste stream?

## Identify

⇒ Where is your energy being consumed?

⇒ Where is energy being wasted?



# Monitor

- ⇒ Implementing cost effective measures to monitor waste streams helps to reduce them on an ongoing basis
- ⇒ “You cannot control what you don’t measure”
- ⇒ Around 20% could be saved on fuel bills simply by monitoring energy bills



# Policy

“Your objectives and targets are as important to your strategy as your strategy is to your objectives and targets... You need your strategy to successfully identify the priority and worthwhile opportunities to save energy and reduce waste and implement change accordingly”



# Action Plan

- ⇒ Integrate the action plan with other management functions
- ⇒ Provide sufficient resources , potentially on an ongoing basis
- ⇒ Ensure your plan is sustainable, so that you can continue to reduce waste and save energy



# Implement

- ⇒ Initiate priority actions and investments
- ⇒ Overcome resistance
- ⇒ Carry out training and raise awareness
- ⇒ Publicise performance and achievements
- ⇒ Report on progress

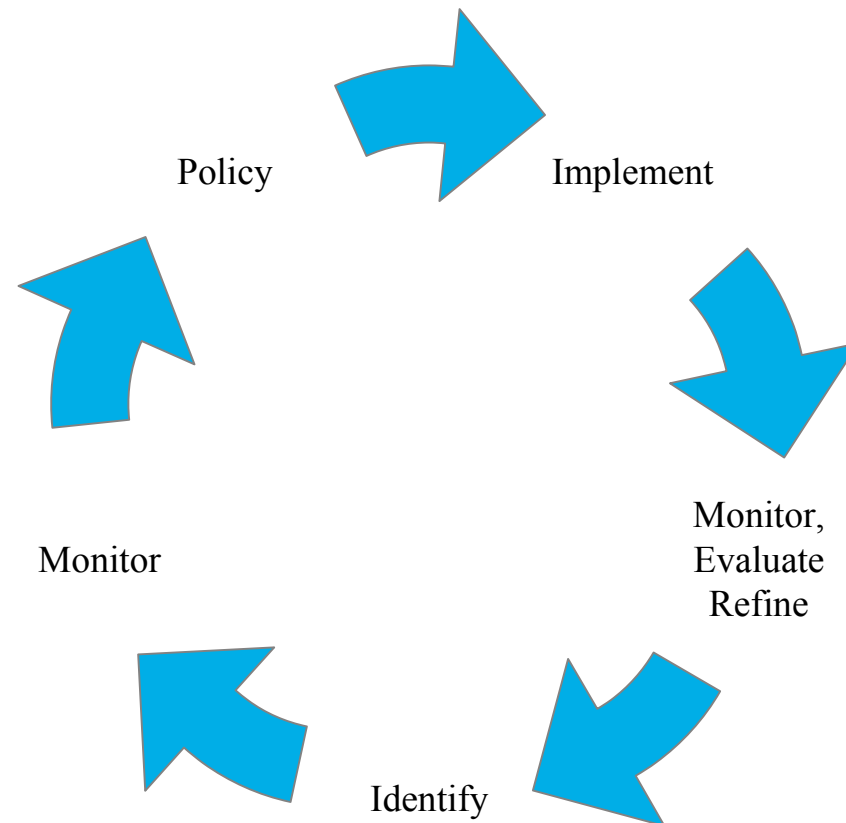




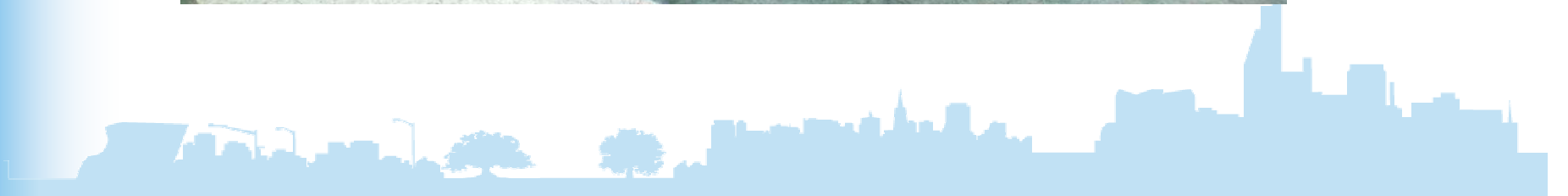
# Monitor, Evaluate, Refine



# Strategy







✓ **PRIORITISE**

✓ CONTROL

✓ **ENCOURAGE**

✓ SUPPORT





The End...

Thank you for listening...

ANY QUESTIONS???

